

# Opticon Configuration Manual



**For use with the EMSScanning system**

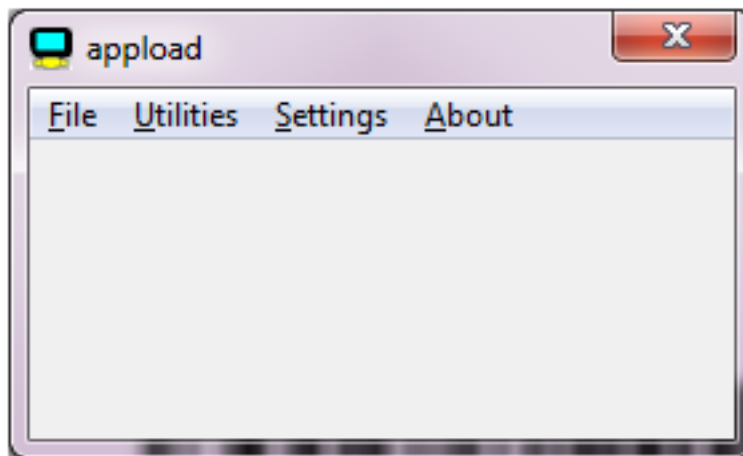
If your scanner has lost it's time, you can follow these steps to restore it.

1. scan the following barcode

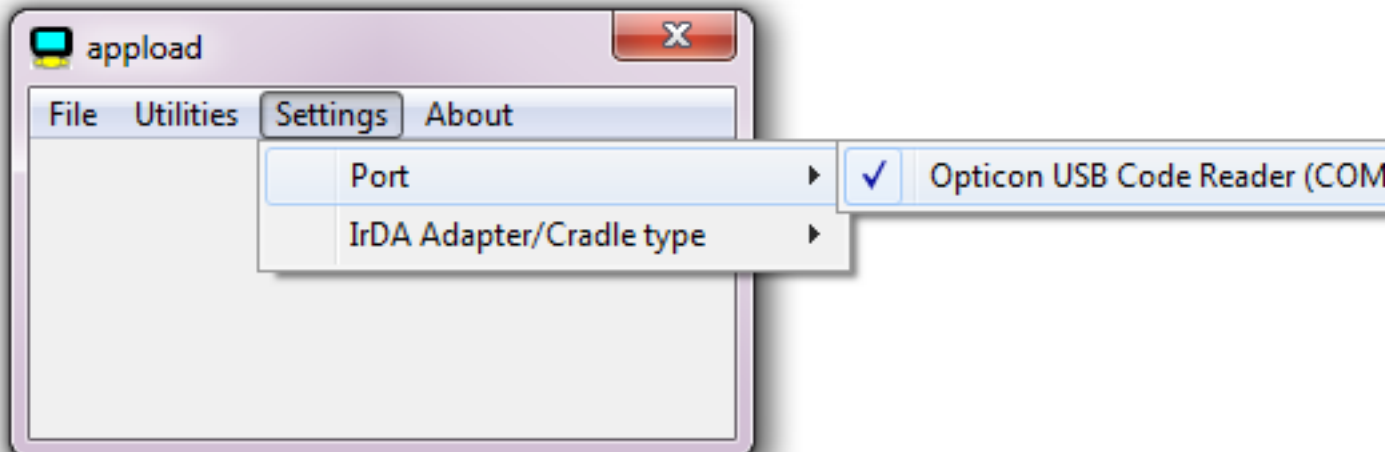


USB-VCP (Virtual Comm Port)

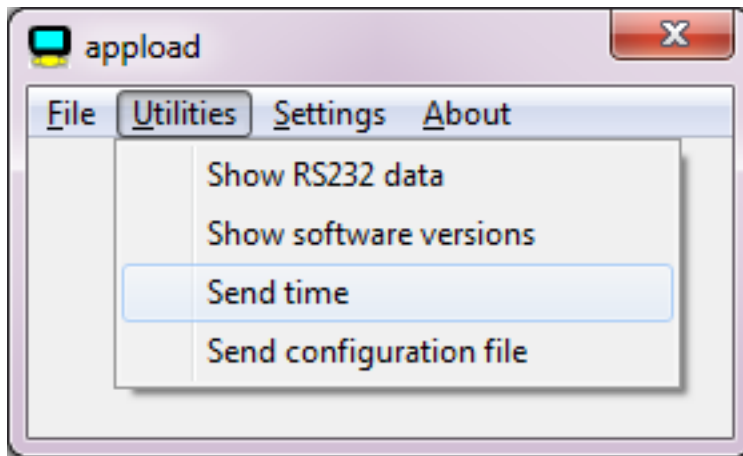
2. Plug your scanner into the computer
3. if you don't already have the Appload software, download it and install it below  
<http://www.emsscanning.com/Opticon/Help/Apps/Appload.exe>
4. Run the Appload software with your scanner plugged in



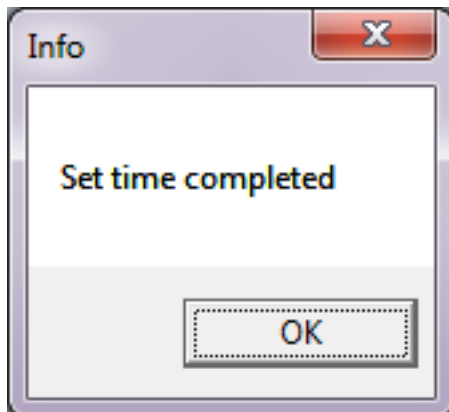
5. Click on Settings -> Port -> and click the port labeled 'Opticon USB Code Reader (Com##)'



6. Click on Utilities -> 'Send Time'



7. Click OK and close Apload and continue to Step 8



8. Unplug the scanner from the computer and scan the following barcode



USB-MSD (Mass Storage Drive)

Your scanner's timestamp is now configured correctly

Make sure to maintain a charge on your scanner to avoid losing the internal time

**If your scanner has not been set up initially continue to the next page.**

**9. Scan the following three barcodes to set the Date, Time and Field separator format correctly**



**Date (YYYY-MM-DD)**



**Time (HH:MM:SS)**



**Field Separator (, Comma)**

**10. Scan the following five barcodes to set field columns correctly**



**Field 1 (Barcode)**



**Field 2 (Serial # of Scanner)**



**Field 3 (Time)**



**Field 4 (Date)**



**Field 5 (None)**

**Your Barcode scanner is now configured correctly**

**Make sure to maintain a charge on your scanner to avoid losing the internal time**



**Set**



**Enable Sound**



**High Low**



**Disable Sound**



**Single Tone**



**End**